



REB RWANDA BASIC
EDUCATION BOARD

Gikeri na Bakame

Icapwa rya kabiri



Imwe mu nkuru zahize izindi mu irushanwa
ANDIKA RWANDA 2019



REB RWANDA BASIC
EDUCATION BOARD

Iki gitabo ni umutungo
wa Leta y'u Rwanda

Ntikigurishwa



Gikeri na Bakame



Imwe mu nkuru zahize izindi mu irushanwa
ANDIKA RWANDA 2019



IRADUKUNDA Aimée Hornella, yanditse iyi nkuru afite imyaka 12, yiga mu mwaka wa 5 w'amashuri abanza, mu Kigo cy'Amashuri Abanza cya Mayebe, Akarere ka Ruhango, Intara y'Amajyepfo. Iyi nkuru ye, GIKERI NA BAKAME ni imwe mu zahize izindi mu irushanwa rya Andika Rwanda 2019.

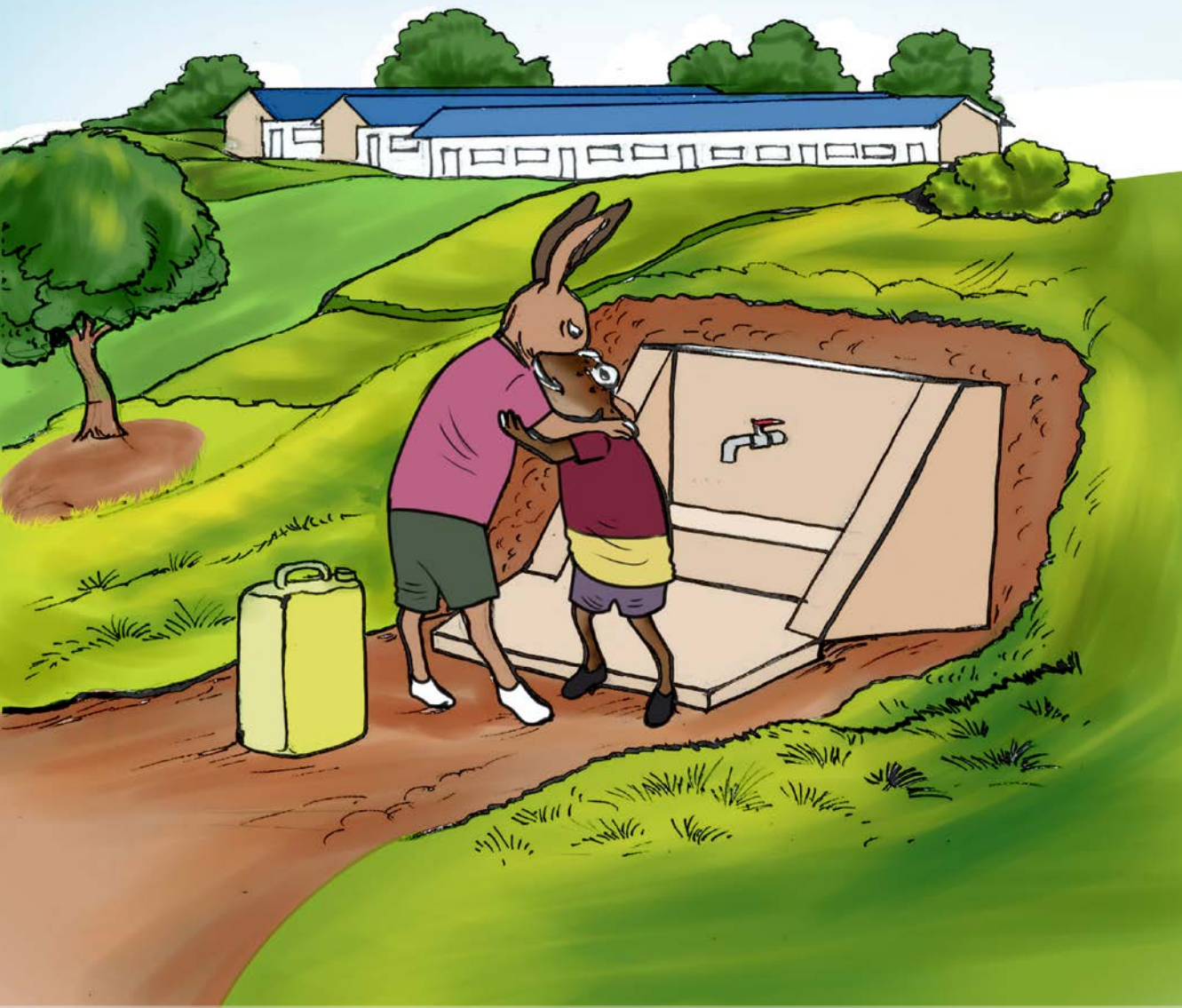
© 2023 Urwego rw'Igihugu rushinzwe Uburezi bw'Ibanze

Uburenganzira bw'umuhanzi w'ibikubiye muri iki gitabo, bufitwe n'Urwego rw'Igihugu rushinzwe Uburezi bw'Ibanze (REB).

Iki gitabo cyashyizwe ahagaragara bwa mbere ku nkunga ya Amerika ibinyujije mu Kigo cya Leta Zunze Ubumwe z'Amerika Gishinzwe Iterambere Mpuzamahanga (USAID). Ibitekerezo bigikubiyemo si ibya USAID cyangwa Guverinoma ya Leta Zunze Ubumwe z'Amerika. Iki gitabo cyashyizwe ahagaragara bwa kabiri ku nkunga ya Banki y'Isi.

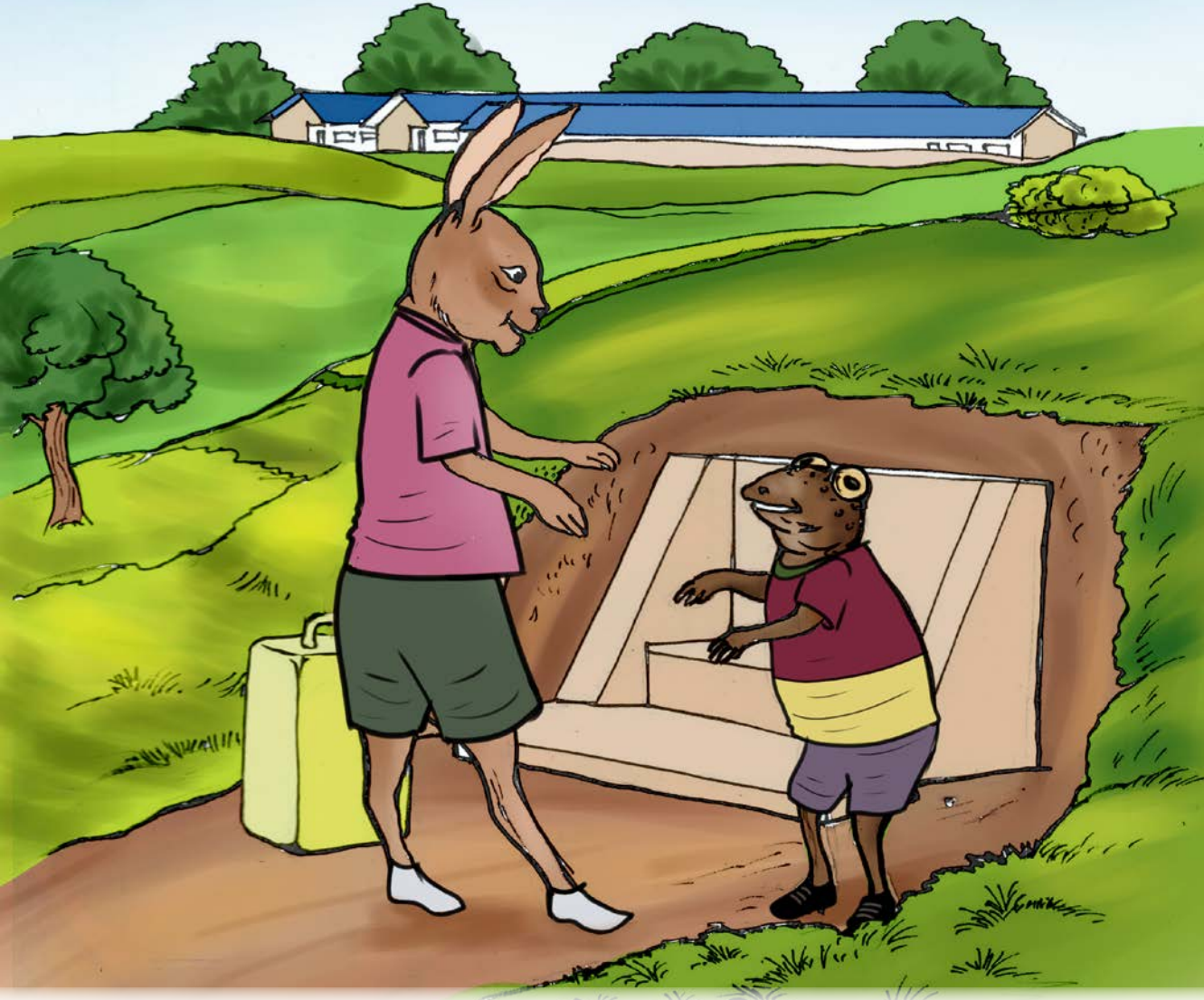


Bakame yagiye kuvoma ku iriba rya Mutuzo.
Agezeye ahura na Gikeri.
Baratangira baraganira.



Bakame: Komera komera Gikeri weee!

Gikeri: Muraho neza Baka!



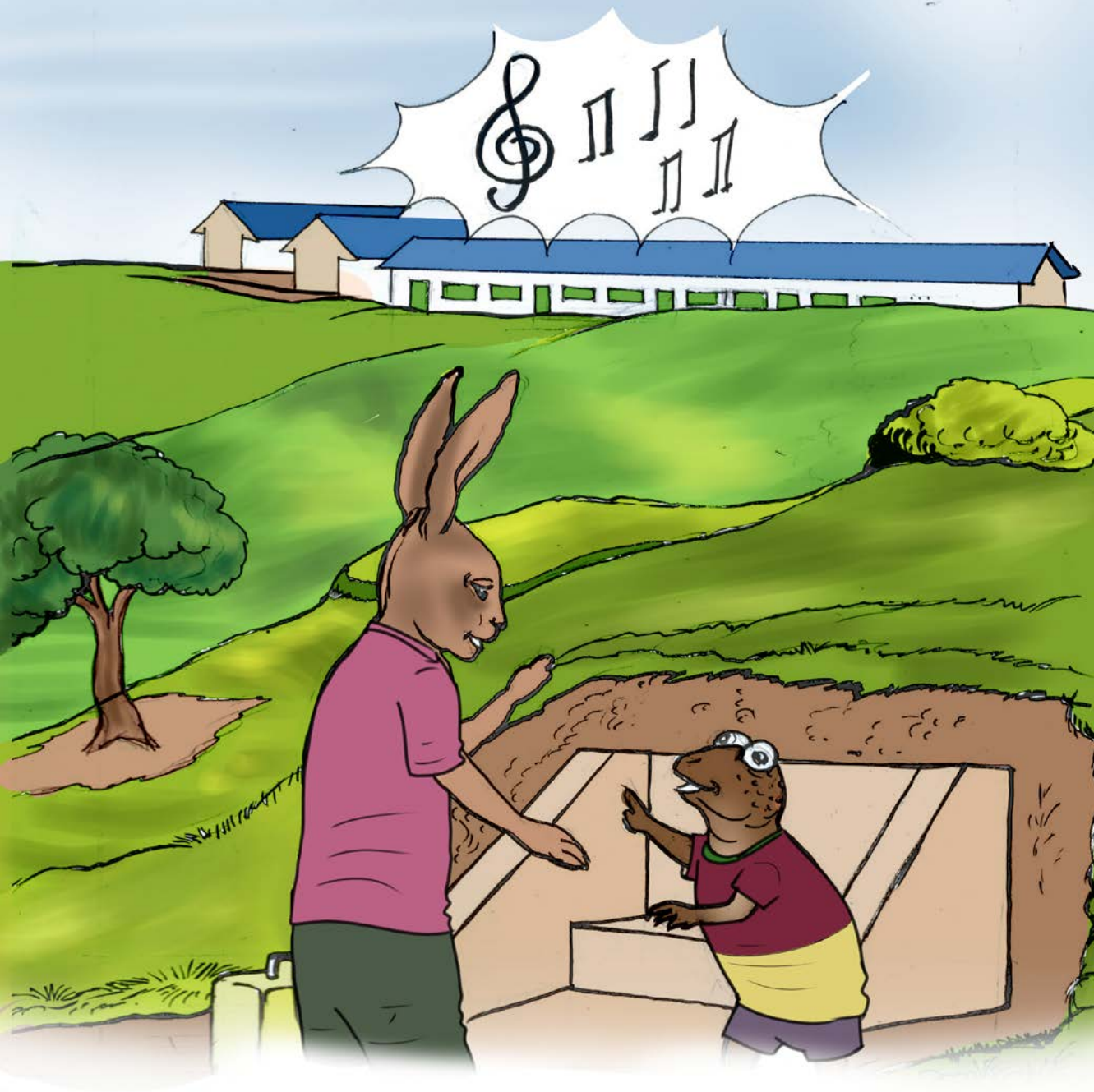
Bakame: Urakora ku mugezi ko nta kivomesho ufite?

Gikeri: Naje hano ku iriba kunywa amazi.



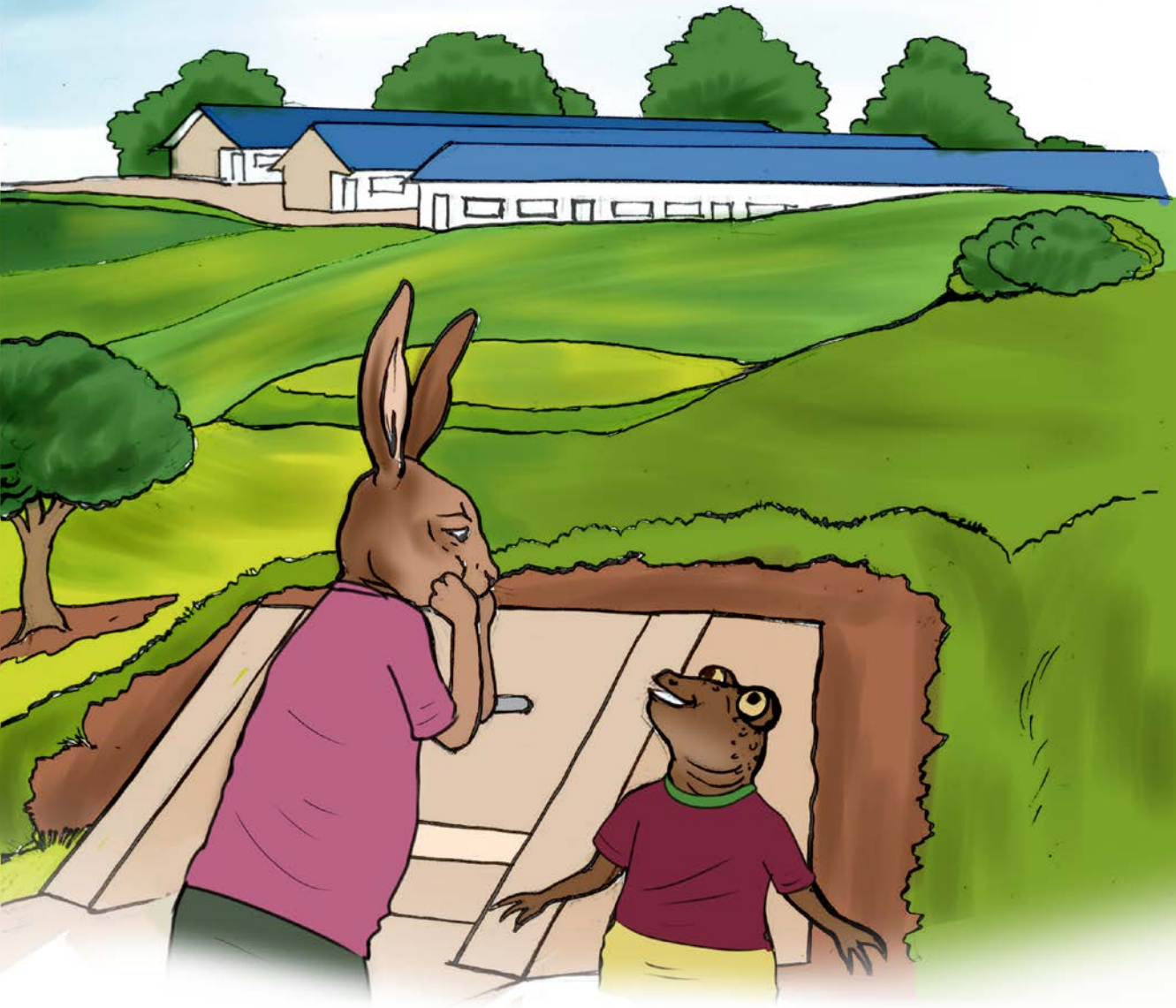
Bakame: None se ko udataha uracyafite inyota?

Gikeri: Oya, mba niyumvira uturirimbo tw'abanyeshuri, nkifuza kwiga.



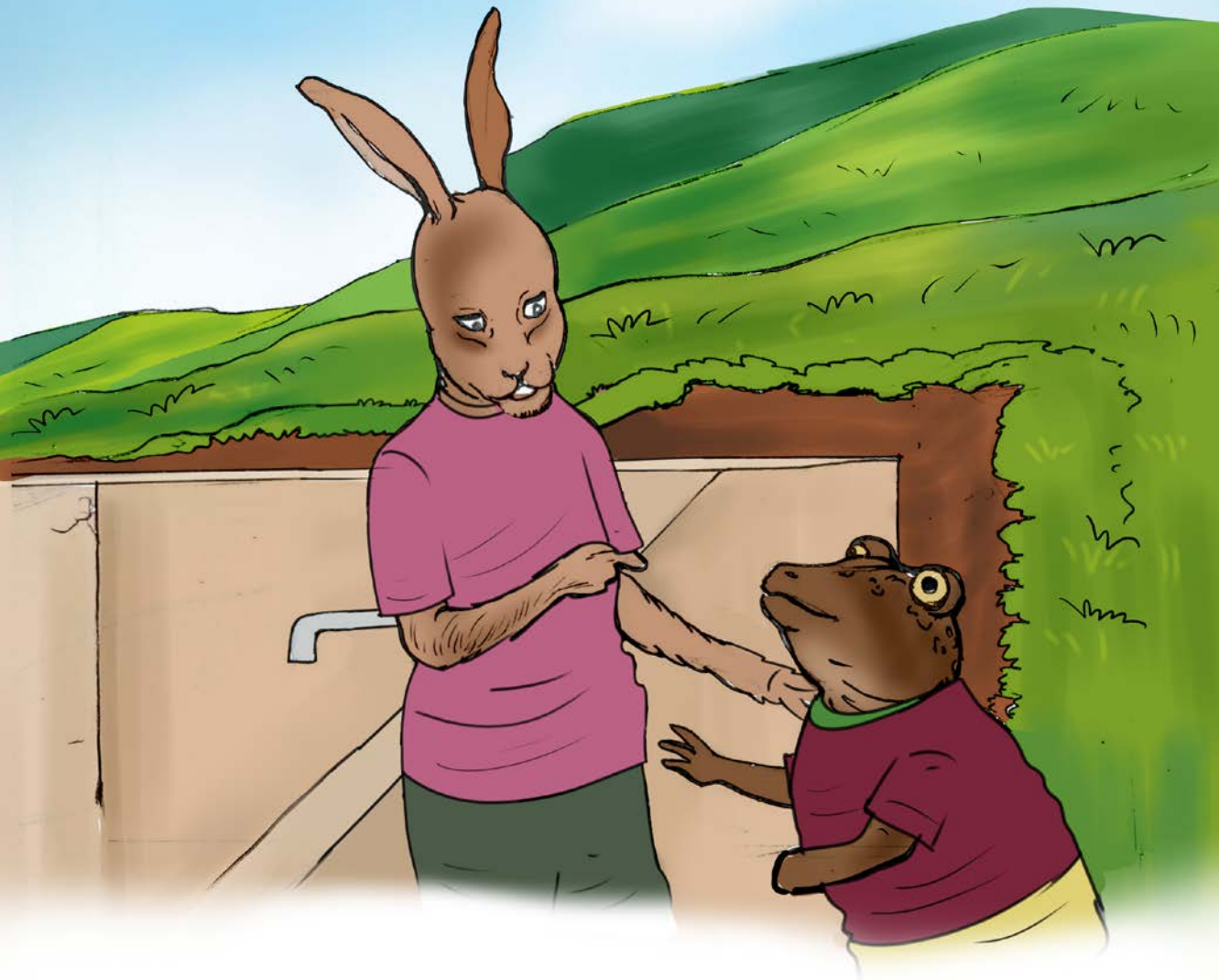
Bakame: Yooo! Mbese burya ntabwo wiga?

Gikeri: Siniga sha Baka!



Bakame: Kubera iki Gike? Ubu koko ntuzi gusoma no kwandika!

Gikeri: Ishuri narivuyemo kuko nabuze imyenda y'ishuri n'ibikoresho.

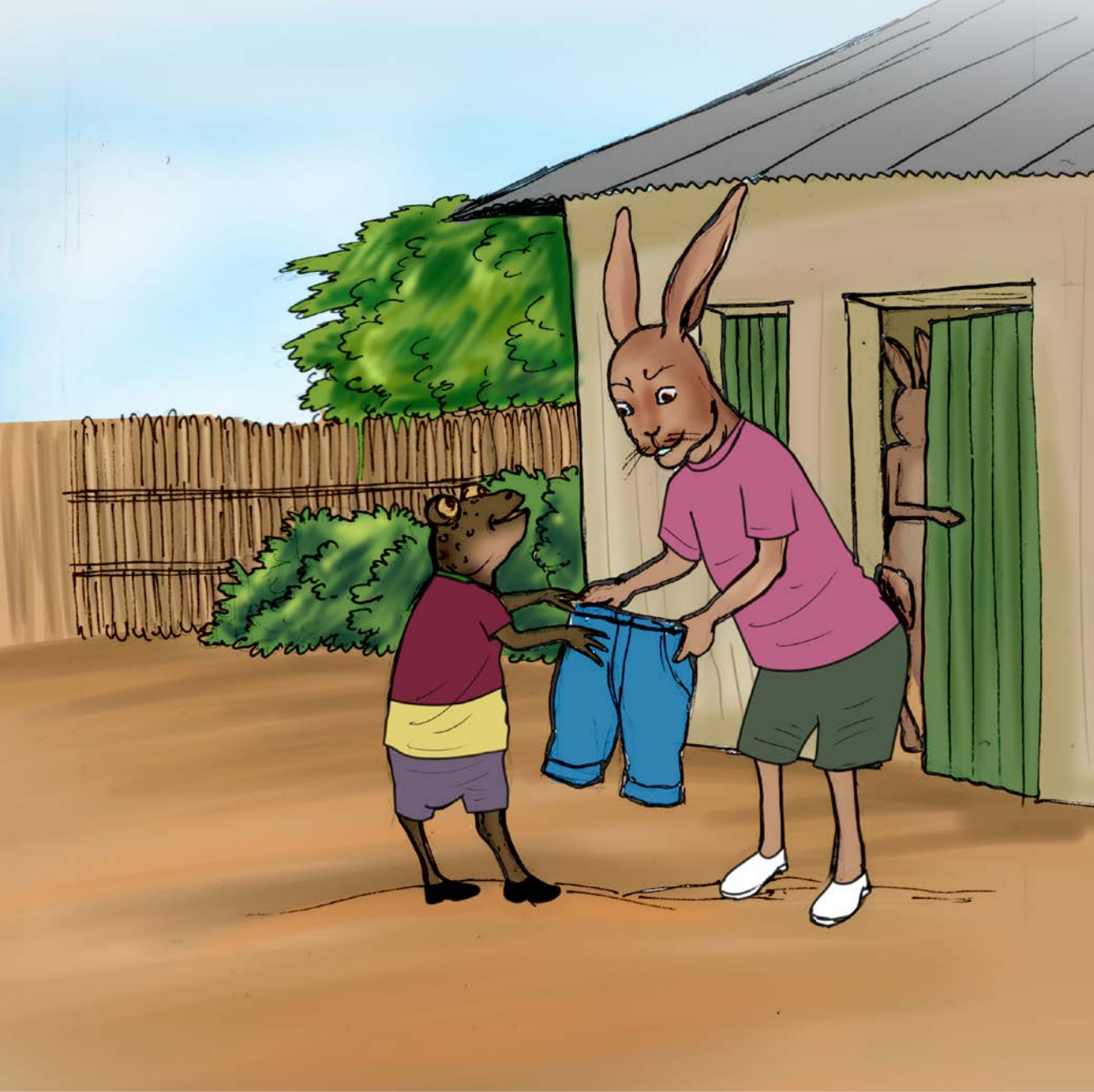


Bakame: Uyu muni ndiga ikigoroba, uze tujyane ku ishuri.

Gikeri: Voma tujyane iwanyu. Urantiza imyenda y'ishuri ngende nambaye.



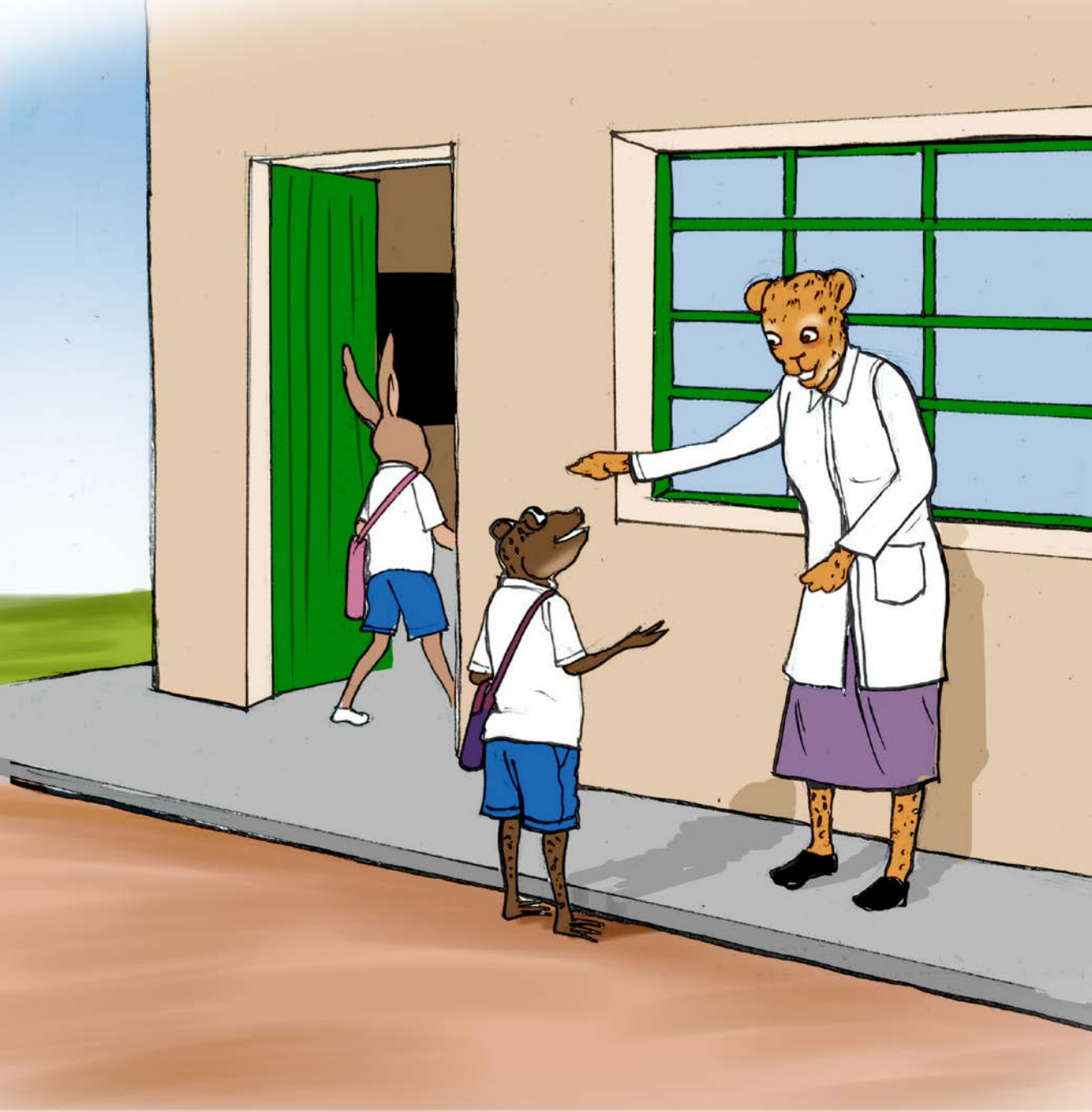
Bakame amaze kuvoma, yikorera ijerekani ye.
Bashyira nzira bajyana iwabo wa Bakame.



Bageze imuhira, Bakame abwira iwabo
ikibazo cya Gikeri.
Bemera kumutiza imyenda y'ishuri
arambara.



Gikeri ajyana na Bakame ku ishuri.
Mu nzira bagendaga baganira amubwira
ibyo biga. Bagezeyo, umwarimu aramwakira.



Bakame abwira umwarimu wabo ikibazo Gikeri afite. Umwarimu aramuhumuriza amuremamo ikizere. Amubwira ko ishuri rizamushakira ubufasha.



Umwarimu abimenyesha umuyobozi w'ishuri.
Bamushyira ku rutonde rw'abanyeshuri
bakeneye ubufasha.



Inama y'ababyeyi iteranye, yiga ku kibazo cya Gikeri. Bemera kumugurira ibikoresho no kumwishyurira kugeza arangije amashuri.



Gikeri yiga neza aba umuhanga mu ishuri.
Ubu yararangije ni umuyobozi ukomeye
cyane.

